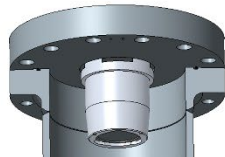




Inline filters are used in hydraulic systems for separating solid materials from the hydraulic fluids and lubricating oils. They are intended for attachment in pipelines.

Your product advantages: 100 FLEN



- Filter element change possible from above
- Optical maintenance indicator
- Drain screw for complete emptying of the filter
- Bypass valve at the highest position of the filter cover (no gas / air accumulation)